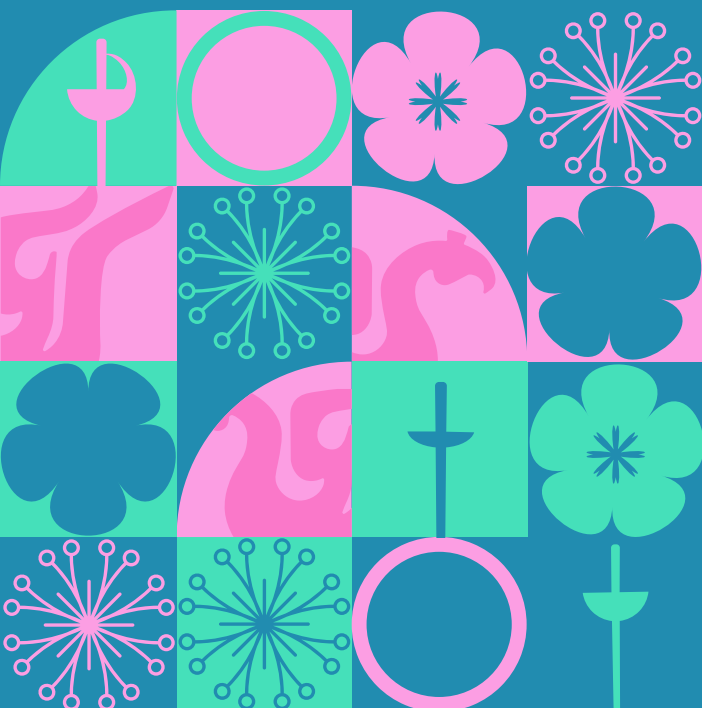


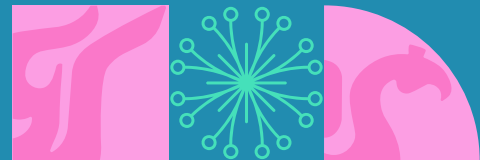


# WUXI 2025

## JUNIOR & CADET FENCING WORLD CHAMPIONSHIPS

### INFORMATION FOR DELEGATIONS

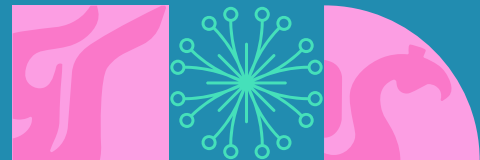




# Information for Delegations

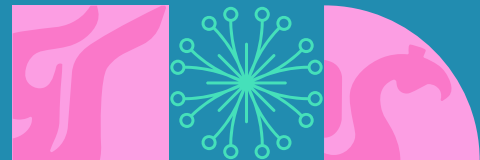
<b>The Official Schedule</b>	<b>3</b>
<b>Confirmation and Accreditation</b>	<b>5</b>
<b>The Competition</b>	<b>6</b>
<b>Competition Venue</b>	<b>7</b>
<b>Offices and Rooms</b>	<b>9</b>
<b>Access to The Fencing Area</b>	<b>10</b>
<b>Equipment and Weapon Control</b>	<b>10</b>
<b>Medical Stations</b>	<b>12</b>
<b>Confirmation of Results</b>	<b>13</b>
<b>Organization of The Individual Direct Elimination T32</b>	<b>13</b>
<b>Organization of The Team Direct Elimination</b>	<b>14</b>
<b>Video Refereeing</b>	<b>14</b>
<b>Educational Programmes</b>	<b>15</b>





## I - Events Schedule Individual & Teams

5 April	8:00	Start of accreditation and weapon control in Wuxi Taihu International Expo Center
	9:00	Start of training session on the Training Hall (C) in Wuxi International Expo Center
6 April	9:30	DT meeting with the officials, referees and the safeguarding officers at Meeting Room in Competitions Hall (A)
	10:30	Referees' seminars (Sabre) at Meeting Room in competition Hall (A).
	10:45	Directoire Technique meeting at Competition Venue
	12:00	The following information is published at the Competition Venue and on the website: <ul style="list-style-type: none"> <li>list of participants by countries Junior Women's Sabre, Junior Men's Sabre</li> <li>list of participants by the initial ranking in Women's Sabre, Men's Sabre</li> </ul> (information for each weapon will be published at 12h00 on the day preceding the event)
	15:00	Deadline for the delegations for making remarks on the published information (same deadline applies for each weapon on the day preceding the event)
	16:00	The composition of the pools is published at the Competition Venue, at the official hotels and on the website (the same applies for each weapon on the day preceding the event)
7 April	9:00	Junior Men's individual Sabre, Pools, Preliminary DE – T32 – Final
	10:00	Junior Women's individual Sabre, Pools, Preliminary DE – T32 - Final.
	16:30	Opening Ceremony
8 April	9:00	Cadet Men's individual Sabre, Pools, Preliminary DE – T32 - Final
	10:00	Cadet Women's individual Sabre, Pools, Preliminary DE – T32 - Final



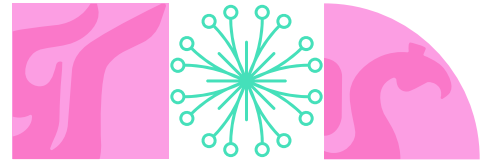
## I - Events Schedule Individual & Teams

9 April	9:00	Junior Men's Teams Sabre, DE T-64-T4 3rd place - 1st place - final
	9:30	Junior Women's Teams Sabre, DE T-64-T4 3rd place - 1st place - final
10 April	8:30	Junior Men's individual Foil, Pools, Preliminary DE – T32 – Final
	10:30	Junior Women's individual Foil, Pools, Preliminary DE – T32 – Final
11 April	9:00	Cadet Men's individual Foil, Pools, Preliminary DE – T32 – Final
	11:00	Cadet Women's individual Foil, Pools, Preliminary DE – T32 – Final
12 April	8:30	Junior Men's Teams Foil, DE T-64-T4 3rd place - 1st place - final
	9:00	Junior Women's Teams Foil, DE T-64-T4 3rd place - 1st place - final
13 April	8:30	Junior Men's individual Epee, Pools, Preliminary DE – T32 – Final
	10:30	Junior Women's individual Epee, Pools, Preliminary DE – T32 – Final
14 April	9:00	Cadet Men's individual Epee, Pools, Preliminary DE – T32 – Final
	11:00	Cadet Women's individual Epee, Pools, Preliminary DE – T32 – Final
15 April	8:30	Junior Men's Teams Epee, DE T-64-T4 3rd place - 1st place - final
	9:00	Junior Women's Teams Epee, DE T-64-T4 3rd place - 1st place - final
	18:00	Closing Ceremony

## II - Confirmation and Accreditation

- The accreditation office and system will remain operational until the end of the World Championships (15 April 2025).
- Neither the fencers nor the coaches will have access to the competition area without their valid accreditations.
- The attendance of a fencer is confirmed once he is registered at the FIE website.
- The participation of athletes in individual and team events is validated when collecting their accreditation, no later than 14h00 the day before athletes have their first competition.
- Fencers do not need to present themselves at the Directoire Technique.
- Payments due to the FIE (if any) should be made by 06 April 2025, 12.00 (noon), at the accreditation desk, to the FIE Accountant Manager/Secretary Treasurer.
- The accreditations will be distributed to the head of delegation, upon payment of their entry fees.
- On the Event Website or by scanning the QR code on the accreditation you can obtain all necessary information application:
  - » Live streaming / Live Result / Daily schedule/ upcoming information
  - » Official website /bus schedule/ training schedule/schedule to weapon control for delegations.
  - » Daily information for delegations.
- **The Accreditation Office** will be open until the end of the World Championships in Wuxi Taihu International Expo Center will be accessible via the main entrance of the complex with the following schedule:

Day	Opening hours
April 05 and 14	08:00-18:00
April 15	08:00-14:00



## III - Individual Competition

**At 12h00 on the day preceding the event the Directoire Technique will publish at the Competition Venue and on the internet:**

- the list of participants by country
- the list of participants by initial ranking
- the list of participants by initial ranking (drawing pools in the Cadet World Championships according to the Organization Rules of FIE Art o.38)
- At 15h00 is the deadline for all remarks, objections or withdrawals presented to the Directoire Technique.

**No changes will be accepted beyond this deadline.**

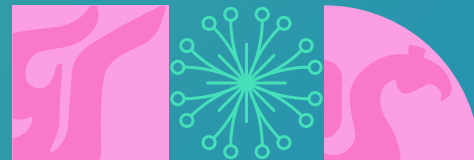
- At 16h00 - on the information panels, TV LED in the Competition Venue, Web site [fie.org](http://fie.org) or by scanning the QR on the accreditation.
- at 17h00 - in the official hotels, the Directoire Technique will publish the following information:
  - » final composition of the pools
  - » times and pistes allocations
  - » competition format

## IV - Junior Team Competition

- The Directoire Technique must be notified of any changes related to the teams by 16h00 the day prior to the event.
- Direct Elimination tables of 64-32 will be posted in the Competition Venue (Information point, TV LED, Web site [fie.org](http://fie.org) on the QR on your accreditation and official hotels the day preceding the team event at 17h00.
- Preliminary tables T32-16 will be fenced on coloured pistes and N° 5-8/9-36 in Main Hall and Hall B
- The Final Direct Elimination tables of 8 will be posted immediately at the competition venue (information point and TV LED screens), on the FIE website ([fie.org](http://fie.org), via the QR code on your accreditation) after the conclusion of the qualifying competitions.
- The drawing of lots to place the teams up or down on the match scoresheet, according to the Rules, will be held where indicated by the DT.

**The team ranking is set according to the Organization Rules of FIE events: Art.o.98**



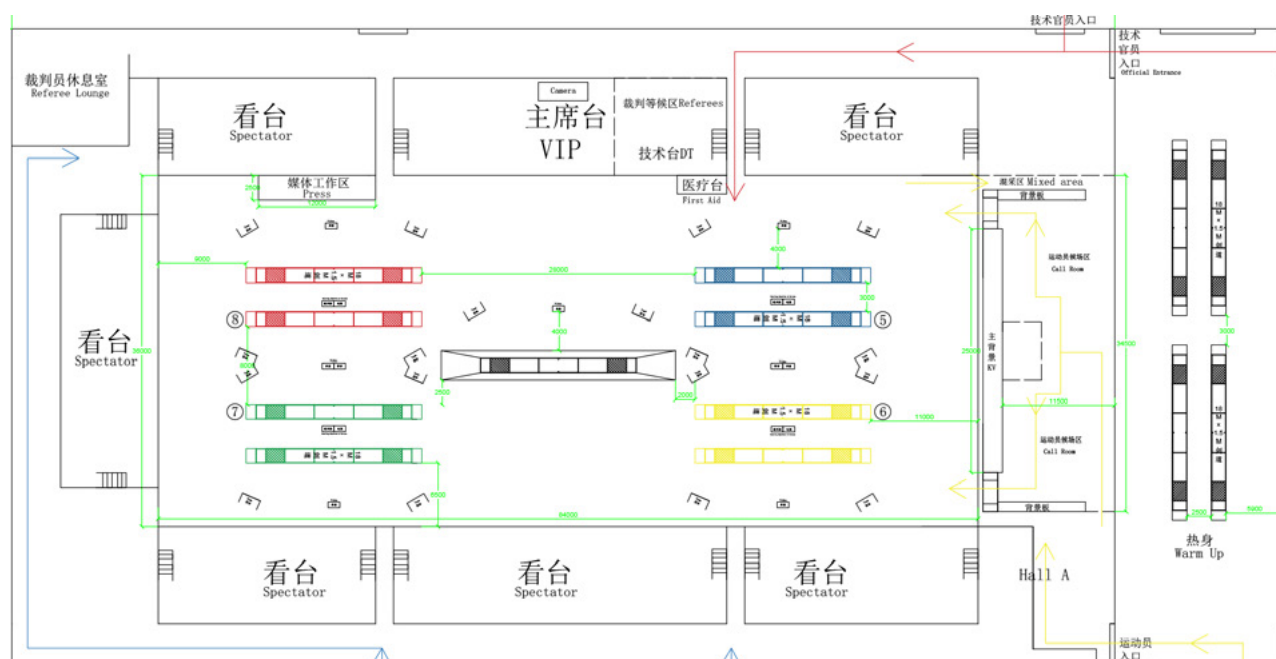


# V - Competition Venue

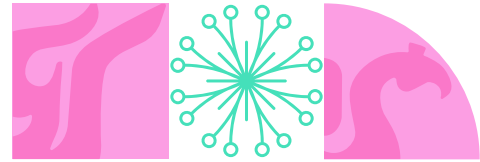
## Wuxi Taihu International Expo Center



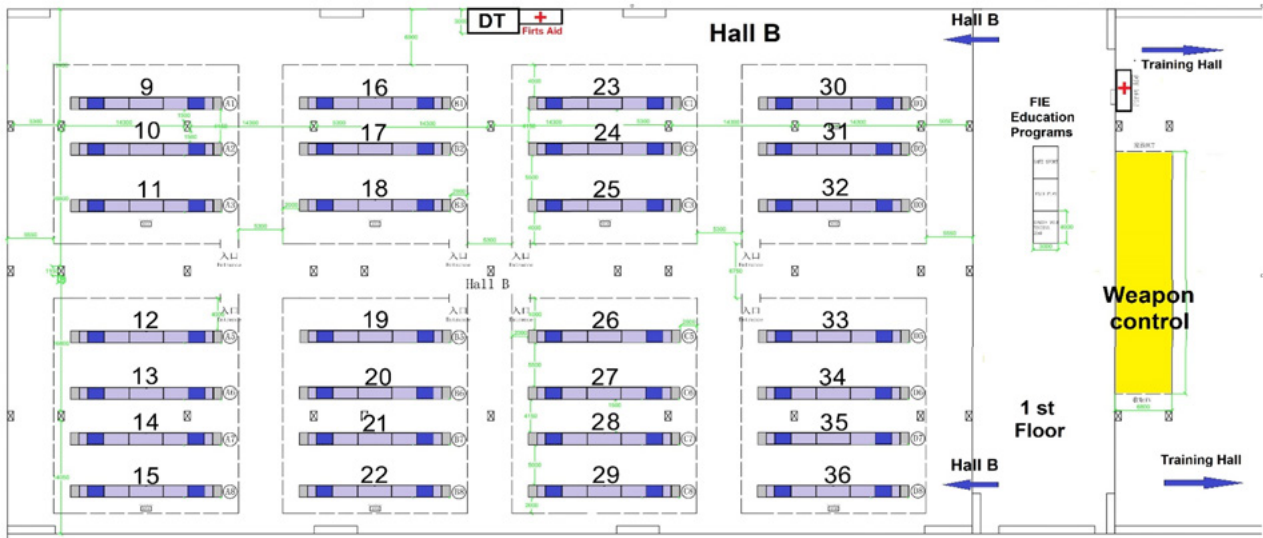
**Zone 1 Main Hall A** - Final's Hall is equipped with 8 coloured pistes with video system refereeing and Final podium (see plan of competition below), the final piste (Podium), Call Room, Press Tribunes, Spectator Tribunes, and Participants' tribunes, FIE Office.



- 8 coloured pistes with video + preliminary Pistes
- Call Room- Directoire Technique

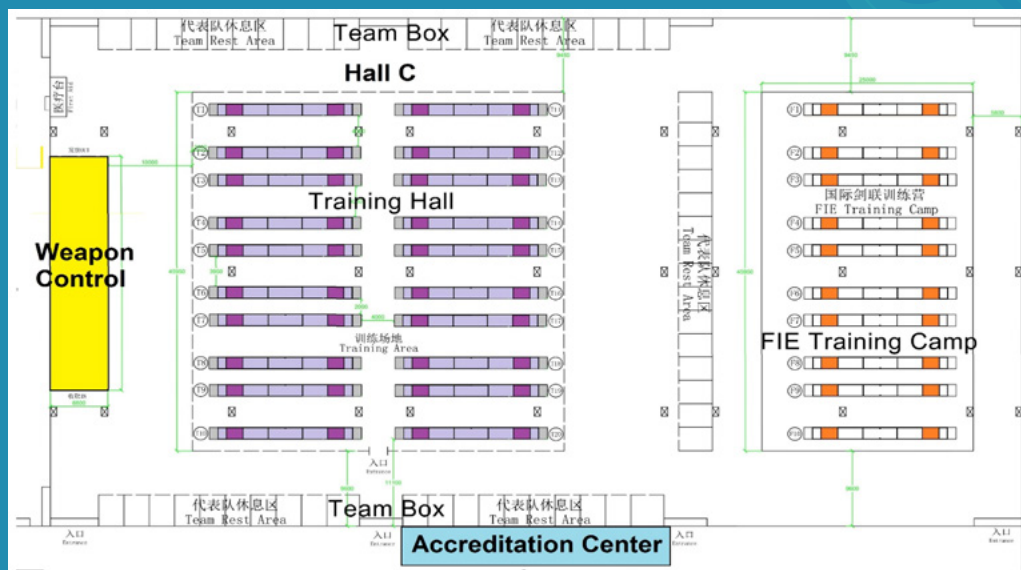


**Zone 2 Hall B - 1st Floor** Additional pistes (9 to 36) for the preliminaries.



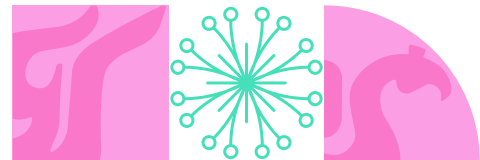
- Training Hall 28 pistes will have independent entrance with controlled accreditation.
- Weapon Control, FIE Education Programs.

**Zone 3 Hall c - 1st Floor** - Training hall, Accreditation Centre, Weapon Control, Nation team boxes.



Team Boxes for the participating teams will be set up in Hall C, Nation team boxes.  
The Training hall is open from 05 April to 15 April: 08h00-18h00  
The Training hall pistes will not be used for warm-up.





The schedule of training sessions, will be updated on 4 April after registration of all participants.

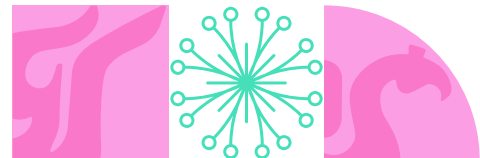
### SCHEDULE OF TRAINING SESSIONS 05 Apr to 15 Apr 2025

TIME	Piste 1	Piste 2	Piste 3	Piste 4	Piste 5	Piste 6	Piste 7	Piste 8	Piste 9	Piste 10	Piste 11	Piste 12	Piste 13	Piste 14	Piste 15	Piste 16	Piste 17	Piste 18	Piste 19	Piste 20
09:00 10:30	AUS	AUS	AZE	AZE	BRA	BRA	BUL	BUL	BEL	BEL	CAN	CAN	CHN	CHN	CZE	CZE	EGY	EGY	AIN	AIN
10:30 12:00	EST	EST	ESP	ESP	FRA	FRA	GEO	GEO	GER	GER	GBR	GBR	HKG	HKG	GRE	GRE	HUN	HUN	ITA	ITA
12:00 13:30	IND	IND	JPN	JPN	KAZ	KAZ	KOR	KOR	KUW	CRO	KSA	KSA	POR	POR	MAS	MAS	MEX	MEX	NED	NED
13:30 15:00	POL	POL	PHI	PHI	ROU	ROU	SGP	SGP	SUI	SUI	THA	THA	TPE	TPE	TUR	TUR	UKR	UKR	UZB	UZB
15:00 16:30	USA	USA	AUT	DEN	FIN	MDA	PUR	NOR	ISR	ISR	LAT	SWE	NZL	SRB	LUX	SVK	MAC	SLO	IRI	UAE LBN
16:30 18:00	KGZ	RSA ECU	CYP	PER CHI	NGR COD	TUN MAR	MGL CRC	LTU IRL	VIE	ISL TJK	QAT TOG	MNE ARM	IRQ PAK	ISV ARG	BRN OMN	ANG NCA	TOG CPV	SYR ALG	IND BUR	VEN COL

Detailed information will also be available at the information desk and on the website.

## VI - Offices and Rooms

<b>FIE President's Office</b>	Hall B
<b>FIE Secretary General and Secretary Treasurer office</b>	Hall B
<b>FIE Office</b>	Hall B
<b>Directoire Technique, Refereeing Delegates and Chief of Protocol</b>	Hall A next VIP Zone
<b>Referees Room</b>	Hall A
<b>Medical Delegates and Medical Centre</b>	Hall A, First Aid Station in A, B and C
<b>Accreditation and Information</b>	1st Floor
<b>Weapon Control</b>	Hall C
<b>Communication, information, and results for the delegations</b>	Hall A, B and C



## VII – Access to The Fencing Area

- Only the designated fencers, referees and pistes staff are granted access to the pistes.
- No access will be granted to the coloured pistes, podium fencing area, coach boxes without sport shoes and long pants.
- Athletes in the fencing area must keep their belongings in closed fencing bags at the end of the piste.
- Big fencing bags are not accepted in the competition area (FOP).

### Individual competitions (Pools):

- The trainers, captains of teams and official team representatives are forbidden to be in a zone of carrying out pools, they are not allowed to remain in the coach box.

### Individual competitions DE:

- Only one coach per athlete is allowed to stay in the coach box.
- Athletes should be present in the Call Room rooms 20 minutes prior to the beginning
- DE-T32 (the first check weapon control)
- Coaches cannot be present in the Call Room.

### Junior Team events:

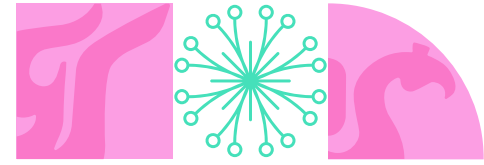
- The team captain and one more person are allowed to stay in the box reserved for teams. (Only 6 persons max) 4 Fencer max + 2 persons max.

### All athletes and referees must be present:

- On the piste 15 minutes before the beginning of the pools
- On the piste 10 minutes before the beginning of the match Pre DE (T128-T64)
- Athletes should be present in the Call room 20 minutes before the beginning of T32
- **Athletes should be present in the Call Room 20 minutes before the beginning of the ceremony of presentation of the athletes (FINALE)**

## VIII – Weapon Control

Day		Opening hours	Event for weapon checking
April 05	D -2	14:00-19:00	Sabre
April 06	D -1	08:00-19:00	Sabre
April 07	D 1	08:00-19:00	Sabre
April 08	D 2	08:00-19:00	Sabre
April 09	D 3	08:00-19:00	Sabre / Foil
April 10	D 4	08:00-19:00	Foil
April 11	D 5	08:00-19:00	Foil
April 12	D 6	08:00-19:00	Foil / Epee
April 13	D 7	08:00-19:00	Epee
April 14	D 8	08:00-19:00	Epee
April 15	D 9	08:00-19:00	Epee



## Requirements regarding the equipment

- All the equipment must be in good condition and working order, complying with FIE regulations and will be checked under control of the FIE SEMI Commission and all the fencers of the same team have to be the same. The list of accepted items is mentioned in the table below.
- It is mandatory to put the logos of the countries on both legs of the breeches.
- The name of the athlete and the name of the country must be printed in dark blue on the back; the size of the letters should be between 8 and 10 cm high. All the prints must be readable. In the venue there will be the possibility to write the names.
- All the advertising and manufacturer logos must be in conformity with the FIE Publicity Code requirements and will be checked.
- After collecting the equipment, it is necessary for the athletes to check the presence of the control markings.
- For additional information, please, see m.38 , m.39 of the FIE Material Rules.



## Electric jackets

The conductive jacket must be made so that when it is laid flat there is a straight line between the point of junction of the lines of the groin and the two points corresponding to the tops of the hip bones (ilium).



The control of electric jackets will be carried out in two steps:

- Firstly, in the Weapon Control room checking the respective electrical parameters and geometric dimensions.
- For the second time, the electric jackets will be checked in the Call Room by the referee, while the athlete is wearing the jacket. The purpose is to check whether the electric jacket is fit for the athlete's body.



## Breast/chest protectors

- The use of a breast/chest protector (made of metal or some rigid material – see m.25.4) is compulsory for women and optional for men. In foil, this breast/chest protector with a special soft layer must be worn below the protective plastron.
- The soft layer has to be approved by SEMI FIE and have the FIE logo.



## Mask

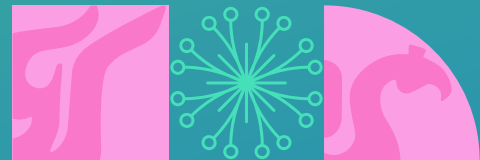
- All the participants to this Junior and Cadet World Championships have to fully comply with the new rule concerning the new fastening system of the mask (m.25.7)



## Mask designs

- Masks may feature coloured designs, on the condition that they are approved by the FIE.





THE NUMBER OF THE EQUIPMENT HAS TO CORRESPOND TO THE BELOW-MENTIONED TABLE FOR TEAMS

		FOIL		EPEE		SABRE	
		MIN	MAX	MIN	MAX	MIN	MAX
1	Weapon	3	4	3	4	3	4
2	Body wire	2	4	3	4	3	4
3	Mask wire	2	4	-	-	2	4
4	Electric Jacket	1	2	-	-	1	2
5	Mask 1600N new system of fastening	1	2	1	2	1	2
6	Under-plastron FIE 800N	1	2	1	2	1	2
7	Jacket FIE 800N	1	2	1	2	1	2
8	Breeches FIE 800N	1	2	1	2	1	2
9	Sabre glove FIE 800N	1	2	1	2	1	2

During the J&C WCH there will be the opportunity to print name and nationality of fencers on the back of the jacket.

## IX - Medical Stations

Medical stations will be at the following places:

### Medical Center Hall A

#### Main Hall

Coloured pistes and 5-8 (1 station)

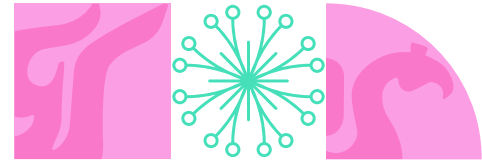
#### Preliminary Hall B

Pistes 9 to 36 (1 Station)

#### Hall C

Training Hall (1 station)





## X – Confirmation of Results

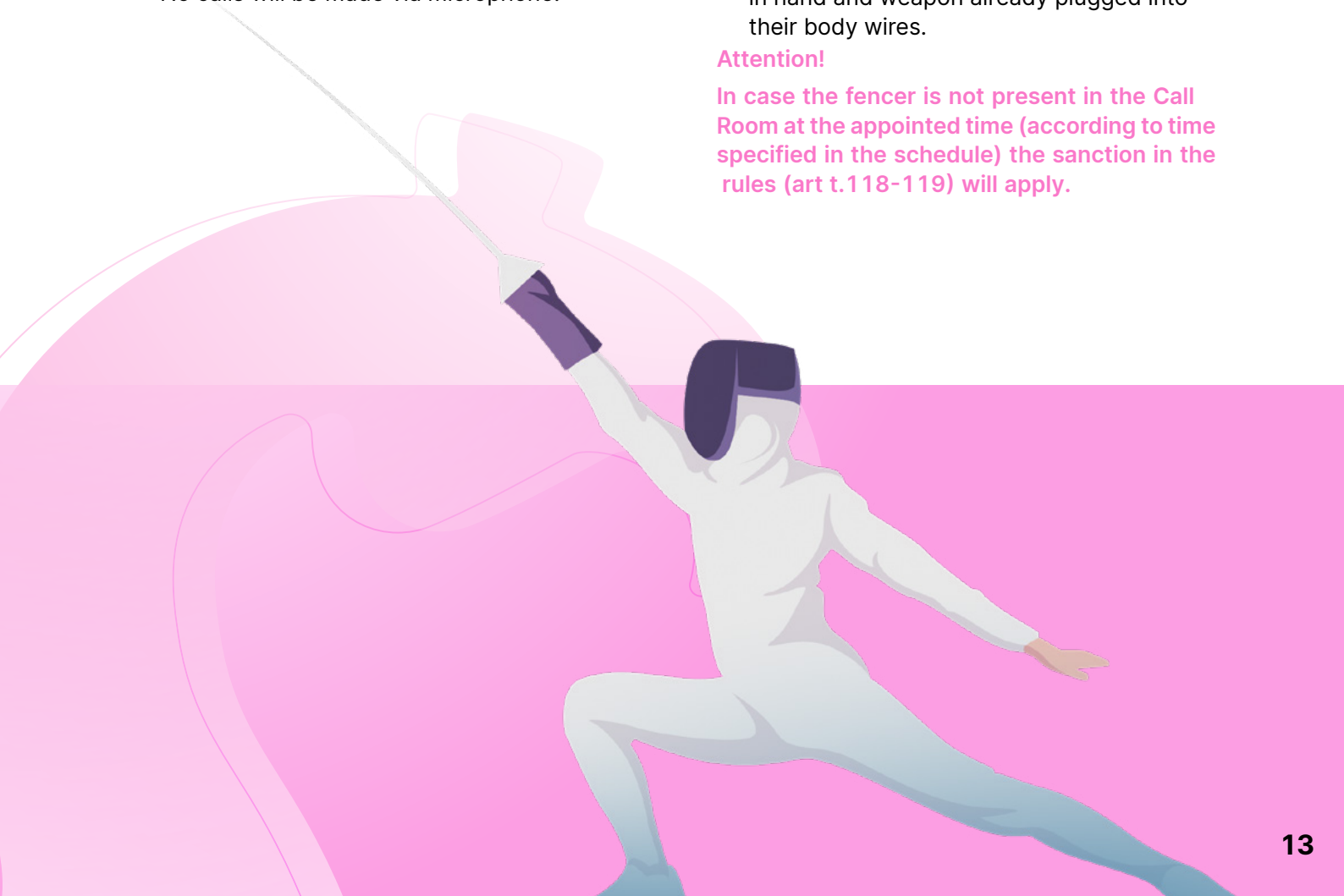
- The fencers are responsible for checking if the results in their pools and the DE sheets are recorded correctly. The screens placed in different locations will allow a quick verification of the updated results of the round of pools and DE matches.
- To avoid any kind of error, the DT will publish the results of the pools and the list of qualified and eliminated fencers as soon as the round of pools is over. Delegations must submit any protest to the DT within 10 minutes. After this deadline, the ranking will not be modified.
- The DE tables, together with the schedule and pistes, will be posted after this 10 - minutes period and after each round of DE.
- Only the documents signed by the TD and posted on the information board are official.
- No calls will be made via microphone.

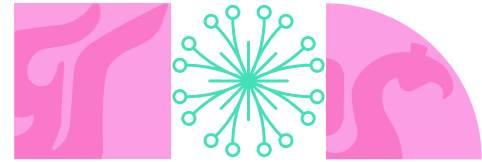
## XI - Organisation of The Individual Direct Elimination Table T32

- For T32 all fencers must be present 20 minutes before the scheduled beginning of their matches.
- Fencers must be present in the Call Room 20 minutes before the scheduled beginning of their matches to be led to the coloured pistes at the scheduled time.
- Coaches are not allowed to be in the Call Room
- The bag is to remain closed for the entirety and put in the team box under the supervision of the volunteer. During the one-minute break, or when it is needed, the volunteer will bring to the athlete a chair and the spare weapon. Athletes are to leave the Call Room ready to fence, mask in hand and weapon already plugged into their body wires.

### Attention!

In case the fencer is not present in the Call Room at the appointed time (according to time specified in the schedule) the sanction in the rules (art t.118-119) will apply.





## XII - Organisation of The Team Direct Elimination Table

- For the T64, T32 and T16 teams must be present at the piste 10 minutes before the scheduled beginning of their bouts.
- All teams taking part in a final stage of tournament (T8-T4) must be present in the Call room 25 minutes before the beginning of the tournament.
- Equipment Control in the Call Room will be from T4 (in earlier stages equipment control will be made on the pistes)
- Equipment will be controlled in the team boxes during the matches T8-T4-Finale.
- The teams will have designated areas, sectioned off by barriers, near the coloured pistes and pistes N° 5-8, 9-33. Team members must remain within these areas during the team matches.

### Attention!

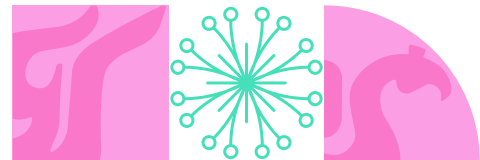
In case the team is not present in the Call Room at the appointed time (according to time specified in the schedule) the sanction in the rules (art.118-119) will apply.

## XIII - Video Refereeing

- Video refereeing is used in all three weapons from the T32 (junior & cadet) at the individual events
- Video refereeing is used from T16 in team events juniors (sabre, foil)
- Video refereeing is used from T8 in team events juniors (epee)
- The designation of referees and videoconsultants is done according to art. t.49-t.51 of the Technical Rules.







## XIV - Educational Programmes

The following educational programmes will be available during the Championships:

- **Clean Sport:**

The FIE and the International Testing Agency (ITA) will host a Clean Sport and Antidoping webinar on March 20, 2025, prior to the 2025 Junior and Cadet Fencing World Championships being held in Wuxi, China from April 7-15.

Panelists for the webinar will include Dr. Sabrina Halaimia and Dr. Lazar Miceta, members of the FIE Medical Commission, as well as members of the ITA education team. To participate in the webinar,

**CLICK THIS LINK**



Webinar date: March 20, 2025

Time: 1300-1400 CET

Platform: Zoom

- **On site**, in cooperation with the local NADO, a Clean Sport Stand will carry out educational activities.

- **Safe Sport:**

The FIE appointed the following Safeguarding officers, that will be active for the entire duration of the competition

- Georgina Usher
- Hossam Ellaboudy

If you wish to contact the FIE Safeguarding officers, please use the following address:

- [safeguarding@fie.ch](mailto:safeguarding@fie.ch)

The LOC appointed the following National Safeguarding Officer:

- Li Ting ([litong\\_bta@yeah.net](mailto:litong_bta@yeah.net))

A Safe Sport Stand will carry out educational activities

- **Fair-Play Stand**

The Fair-Play stand will be active from the 7th to the 14th of April. It will be animated by the following members of the FIE Fair-Play Council:

- Gabor Deregán
- Omneya Mansour

- **Donate Your Fencing Gear**

If you wish to donate your fencing gear and support solidarity projects in fencing, please bring your equipment to the Donate Your Fencing Gear stand. It will be collected, checked by a FIE SEMI Commission Delegate and received by one of the beneficiaries countries of the edition 2025:

- El Salvador
- Kyrgyzstan
- Oman

You will receive your donor's certificate and your picture will be posted on the FIE social media.

For more information please contact [elena.murdaca@fie.ch](mailto:elena.murdaca@fie.ch)

