

# Marathon foils 2016

Challenge C.E.P benjamins, minimes, cadets



## Liste des Hôtels



**Hôtel NOVOTEL (\*\*\*\*)** à 4 min à pied de Carpentier  
tarif marathon fleuret  
22 rue Voltaire 94270 LE KREMLIN BICETRE France  
E-mail [H5586@accor.com](mailto:H5586@accor.com)



**Hotel IBIS Budget(\*\*)** à 4 min à pied de Carpentier  
tarif marathon fleuret  
20 Rue Voltaire, 94270 Kremlin Bicetre  
Tel : +33 892702034  
Tel:+33 1 45211909

**Cost: € 30 by fencer**

**Registration: By mail to [marathon2015@escrime-cep.com](mailto:marathon2015@escrime-cep.com)**

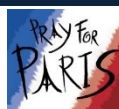


Paris - FRANCE



[www.marathon-fleuret.com](http://www.marathon-fleuret.com)

## Challenge CEP Marathon fleuret **minimes cadets**



PRAY FOR  
**PARIS**  
13 NOVEMBER 2015

## Fencing camp 3,4 february 2016 Guilio Tomasini

Fencers group with their coach, who come for 2 days, to training with fencers from all around the world and take lessons with their coaches

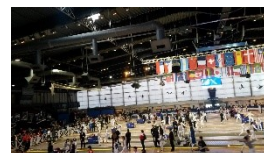
**Dates: Wednesday, February 3 - Thursday, February 4, 2016**

**Location: Halle Carpentier 81 bd Massena 75013 Paris**

**Hours: 9:30 - 12h / 14h - 17h**

**Cost: 50 € per fencer for camp**

**Registration: Per mail [marathon2016@escrime-cep.com](mailto:marathon2016@escrime-cep.com)**



## Challenge C.E.P - Marathon foils **2016**

cadets 1999--2000 - benjamins, minimes 2001-2004 ,

**6-7 February 2016**

**Tournois foils with 2<sup>nd</sup> chance 64 & 32**

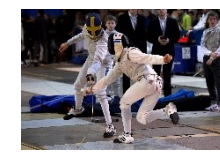
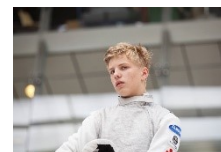
men and women foils

**Information - Registration: before 31 January 2016**

Per internet : <http://www.marathon-fleuret.com>

Per e-mail : [marathon2015@escrime-cep.com](mailto:marathon2015@escrime-cep.com)

Per tel : 0033 - (0) 6 87 69 09 39



[www.marathon-fleuret.com](http://www.marathon-fleuret.com)

### ARTICLE 1 : Test, date and place

Individual events foil:  
Minims men and women (2001-2002-2003-2004)  
Cadet Men's and Women (2000 -1999)

**Location:** Halle Carpentier, 81 Bd Massena 75013 PARIS FRANCE

**Dates:** Friday, February 5, 2016, Saturday, February 6, 2016 & Sunday, February 7, 2016



### ARTICLE 2 : Fencing equipment

Fencing suit 350N or 800N (FIE), with under plastron 800N. Mask 350N or 800N. electric mask for cadet only  
Foil blade size 5 or smaller. All handles are authorized. All types of blades are authorized: Maraging blades are not required

### ARTICLE 3 : Formule

Cadets : poule in 5 points, 3 min, DE bouts in 15 points 3x 3 min  
Minimes : Poule in 5 points, 3 min, DE bouts in 10 points 2x3 min



### On saturday : preliminary tournament

- 2 rounds of pools - Table of 512, 256, 128 of which 105 qualify for Sunday\*

\*Please note!

The best 97 fencers in the table of 128 qualify for Sunday

The remaining 31 fencers fence two DE bouts in order to qualify the last 8 fencers for Sunday

### On saturday Tournament with repechage: 105 fencers per category except cadets womens

105 fencers - 1 round of pools- 80 qualify - Incomplete table of 128- Table of 64 with repechage - Table of 32 with repechage

### Category Cadets women:

**Saturday: 2 rounds of pools - up to 64 ED / Sunday: T64 with repechage**

### ARTICLE 4 : Schedules – Timetable

3-4, February, 2016

<b>Fencing camp : fencers - coaches with Giulio Tomassini</b>
Wednesday, February 3 and Thursday, February 4th from 9.30am to 12 am and from 14h to 17h

### Friday, 5 February, 2016

<b>All categorie's</b>
<b>14h00 to 20h00 : Open hall for training</b>
<b>14h00 to 20h00 : Incriptions, Checking, Photos, Accréditation, Equipment control, stikers</b>
<b>19h30 : Referees reunion</b>
<b>21h00 : Pools on line</b>

### Saturday 6 February, 2016

<b>Cadets men's 99-00</b>	<b>Minimes women's 01-04</b>	<b>Minimes men's 01-04</b>	<b>Cadets women's 99-00</b>
6h30 open hall	6h30 open hall	11h30 open hall	11h30 open hall
7h30 start Poules	7h30 start Poules	14h00 start Poules	14h00 start Poules
13h Tableau of t32	13h Tableau of t32	20h Tableau of t32	18h45 Tableau 128

### Sunday, 7 February, 2016

<b>cadets women</b>			
	10h00 :T64 with repêchage	17h00 1/4 Finales	18h30 Awards
<b>All other categories</b>			
7h00 : open Halle	8h00 : start Poules	10h00 :T64 with repêchage	18h30 Awards

### ARTICLE 5 : checking days, and Equipment control of Friday.

- Training hall 2:00 pm -8:00 pm -Checking fencers 2:00 pm -8:00 pm
- Checking referees 2:00 pm -7:00 pm - Referees meeting 7:30 pm
- The equipment control will take place in the Carpentier hall only Friday 5, from 2:00 pm till 8:00 pm.

Fencing Masks, gloves, electric cable and electric jackets will be checked.



### ARTICLE 6 : Accreditation

Requests for accreditation for coaches are to go before January 25th, 2016 by e-mail [accreditation@escrime-cep.com](mailto:accreditation@escrime-cep.com) or directly on the site or section [http://www.marathon-fleuret.com/accreditations\\_marathon.html](http://www.marathon-fleuret.com/accreditations_marathon.html)

1 accreditation for 1-4 fencers present / 2 accreditations for 5-9 fencers present / 3 accreditations for 10-13 fencers present / 4 accreditations for 14-17 fencers present / 5 accreditations for 18 to 20 fencers present / 8 accreditations 21-29 fencers present / 10 Accreditation for 30 or more fencers present no accreditation will be made after this date. Recovery accreditation pressed exclusively made Friday, February 5 at 14h to 19h hall

### ARTICLE 7 Licences

All national licences are accepted (French and foreign) as well as FIE licences

### ARTICLE 8 : Referees

- Each club or delegation with more than 3 competitors must provide 1 referee . Each club or delegation with 9 or more competitors must provide 2 referees . For 15 competitors or more, 3 referees will be asked. For 22 competitors 4 referees will be asked..
- Instead of providing a referee, a club may choose to pay a contribution of 210 €. (Before January 25th, 2016).
- This money will be used to provide additional referees – failure to submit referees will result in a fine of 450€ per referee.
- Referees meeting 7:30 pm Friday 5 february, 2016. Absence of a referee Friday 7:30 p.m., and/or, Saturday 7:00 a.m. , leads to disqualification of the club's fencers, or a fine of 450 € to the club for not having presented a referee. Late arrival of the referee, Saturday and Sunday, will result in a financial penalty.
- The commitments by clubs of referees are for both days of competition.
- All referees will be present Saturday, February 6, 2016 before 7:00 am
- For clubs who have not registered a referee before January 25th 2016, must provide a security deposit of 450 €. The deposit will be returned on Sunday if the club provides a referee.



### ARTICLE 9: Directoire technique

All disputes will be decided by a Directoire Technique, which will be constituted the day of the competition. The organiser accept no responsibility for any accidents, thefts or losses the competitors or spectators may suffer.

The organisers reserve the right to modify the formula according to the number of competitors. By entering the competition, competitors are deemed to have accepted these rules and all measures which may arise from them.

### ARTICLE 10 : Inscription

Entries must include the, names, dates of birth, club names and phone number :

<b>Registrations must be received by C.E.P. before january 31, 2016</b>	
By web site :	<a href="http://http://www.marathon-fleuret.com">http://http://www.marathon-fleuret.com</a> Topic marathon 2016 registration
By E-mail	<a href="mailto:marathon2016@escrime-cep.com">marathon2016@escrime-cep.com</a>
By Mail:	Mme LE CORRE Pascale - C.E.P - Cercle des Escrimeurs Parisiens 24 r Moulin de la Pointe 75013 PARIS - FRANCE
<i>In order to ensure smooth running of the competition, the organisers may close registrations prior to the scheduled closure date (e.g. if the number of competitors reaches a critical level). Registrations will be accepted on a first come first served basis.</i>	

### ARTICLE 11 : Entry fees

There is a possibility to pay the registration fee before the competition date. The fee can only be refunded if a fencer is unable to participate and if the fencer has informed the organiser at least 120 hours before the start of the competition (before Monday, february 1th, 2016, 7:30 am.). No refunding will be carried out after this deadline..The entry fees shall be:

Before January 28, 2016	29 €
January 28, 2016 to February 6, 2016	50 €
By Visa MasterCard – Internet (payment)	<a href="http://www.marathon-fleuret.com">http://www.marathon-fleuret.com</a> Topic marathon 2016 registration
By cash	To Carpentier Hall - 5 february , 2016
By Bank transfer	Contact us by e-mail <a href="mailto:pascale.lecorre@escrime-cep.com">pascale.lecorre@escrime-cep.com</a> we send you bank identification code and iban number

### ARTICLE 12 : Awards

Will be rewarded with trophies, cups and medals the first 8, the best upgraded (years 2003, 2004), and best coach. Lots of reward values in the first: Computers, XBOX, PS3, Wii, Video Home System, photo, DVD, hardware, fencing equipment

### ARTICLE 13: Airport shuttle

A private company can arrange to transport you between hotel - airport – fencing hall . Price per trip and per person € 17 Reservation is taken on the web : [www.marathon-fleuret.com](http://www.marathon-fleuret.com) or email: [shuttle@escrime-cep.com](mailto:shuttle@escrime-cep.com)

**Reservations must be made before January 28, 2016**

### ARTICLE 14 : Food

A food stand will be open over the whole week-end.

### ARTICLE 15 : Stand

A sales booth for fencing equipment will be open over the whole week-end..